



 AMRUT
Sai Plaza

PROJECT BY : LILASONS DEVELOPERS LIMITED



AMRUT Sai Plaza

En route to the picturesque surroundings of Paithan Road, Sai Plaza is a warm and homely township situated at zero kilometers from Railway Station. Centrally open and designed to cherish the modern ways of social life, Sai Plaza provides amenities such as a grand entrance gate with a security office, landscaped garden, children's play-park, amphitheatre and a jogging track. A welcoming society of cozy homes, Sai Plaza is a little world in its own built to compliment the joyful today and the promising tomorrow.



Layout Plan





Amrut Sai Plaza.....

host modern homes that provide all the basic needs to lead a comfortable life.

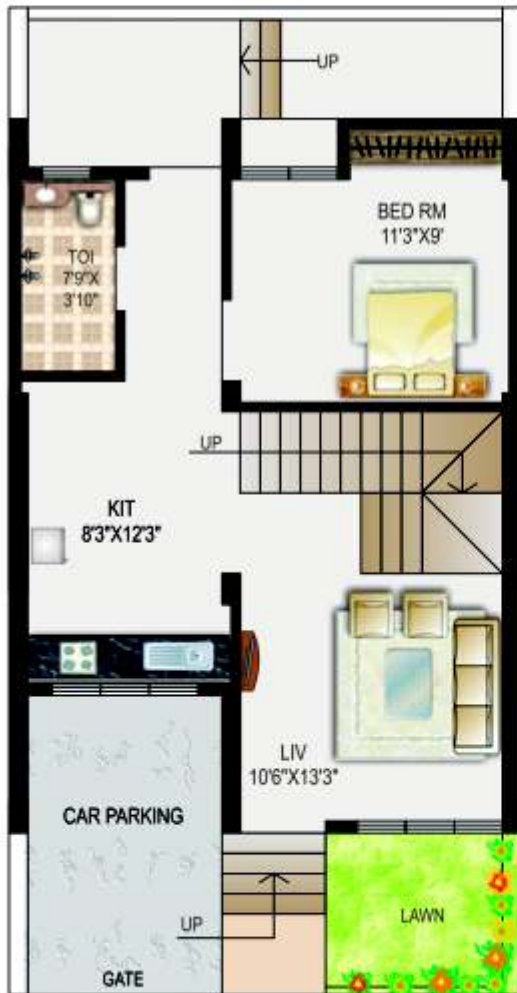




AMRUT
Sai Plaza



Row House
EAST FACING



GROUND FLOOR PLAN



FIRST FLOOR PLAN

Intelligently planned, the row houses at Sai Plaza make optimum use of the space while providing useful as well as attractive features such as car parking, lawn and terraces. All the row houses are either East or West facing.

Row House WEST FACING



GROUND FLOOR PLAN



FIRST FLOOR PLAN



AMRUT Sai Plaza



APARTMENTS K, A, B, C



GROUND FLOOR PLAN

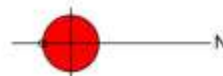


The smartly planned apartment buildings at Sai Plaza host modern flats that provide all the basic needs to lead a comfortable life. All the flats have either East or West entrance.

APARTMENTS K, A, B, C



TYPICAL FLOOR PLAN





Specifications

- Structure** : Standard RCC Frame Structure of high quality.
- Walls** : High quality brick masonry 6" thick for external & 4" thick for internal walls.
- Plaster** : Exterior surface in sand face plaster with waterproofing. Internal plaster neeru finish.
- Paint** : Interior wall with pleasant shades painted with OBD.
- Flooring** : Premium quality Ceramic tiles in all rooms.
- Kitchen** : Kadappa kitchen otta with sink, dado of glazed tiles up to 1 mtr high above the platform.
- Toilets** : W.C.- Premium quality Ceramic flooring with Orissa pan. Bathroom - Anti skid Ceramic flooring, Attached Toilets - Ground Floor - Orissa pan First Floor - European pan. glazed tiles up to lintel level.
- Door** : Main Door - Flush door with decorative sheet with brass fittings.
- Other Doors** : Flush door enamel painted with MS fittings.
- Window** : Standard quality Aluminum powder coated windows with enamel painted grills.
- Plumbing** : Concealed plumbing with 'B' class GI pipe.
- Electrification** : Patti wiring with suitable point in each room. Flats - Open wiring in capping casing Row House - Concealed wiring

LOCATION PLAN



Credits

Architects
Space
Arch. Ganesh Mharolkar
Ph.: 2346644

RCC Consultants
Core Consultants
Ph.: 2339787

Legal Advisor
Adv. Suresh G. Rudrawar
Ph.: 2482129



For Booking Contact

AMRUT DEVELOPERS

Shop No. 207, Labh Chambers, Station Road, Aurangabad.
Ph.: 0240 - 2347123 Mob.: 9823105147